

Selected Translation of World of WeiQi

Background by translator

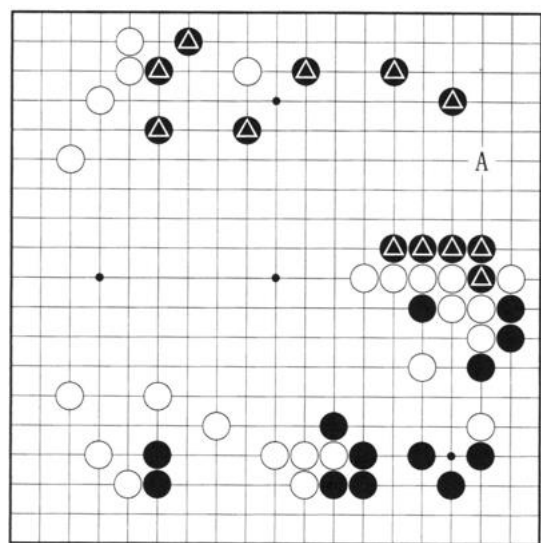
Here we present 2 articles from World of WeiQi. Both concerning how to limit your opponents' influence before he/she turn this influence into solid territory. The first article is by Hu Yaoyu (胡耀宇) and is about using corner to invade your opponent, the second article is by Ge Yuhong's Dojo (葛玉宏道场), a famous Chinese Go school and is also about limit and invade your opponent.

Hu Yaoyu (8p) is a player that preferred a balanced game, he is a very talented player and now is the tactical coach of China female Go team. While Ge Yuhong's Dojo emphasis more on precision of calculations, Ge himself is an advance armature player but has helped many players to become professional player including Yu Zhiying and Li Qingcheng and is famous for its strike military style discipline.

Utilizing corner area

By Hu Yaoyu

Like many may fear your opponent has a large influence area. If you do nothing than influence may became territory and if you go inside very deeply you may fear the invading force might be trapped. In this article we shall discuss how to utilize the corner area to limit your opponent's influence. This may come in handy when your opponent has weakness in its corner.



Problem 1: The black has enlarge its influence, but a direct invasion at A is too dangerous

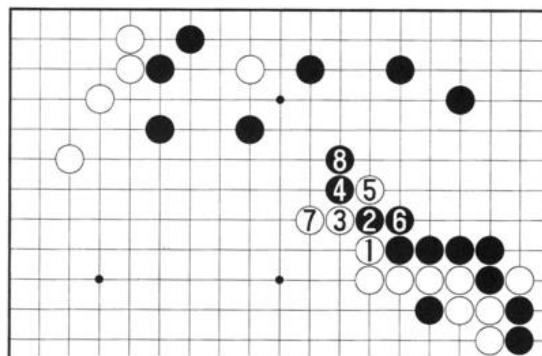


Figure 1: the white's 1 is too soft and although white will not be threatened, the black's influence is now territory.

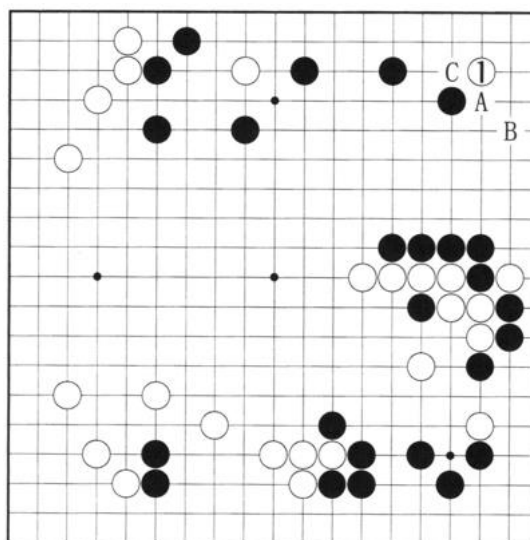


Figure 2: The white may also be trying to use 1 to make some trouble, this may be answered by A or B (C is less likely now because there're more room to the lower part)

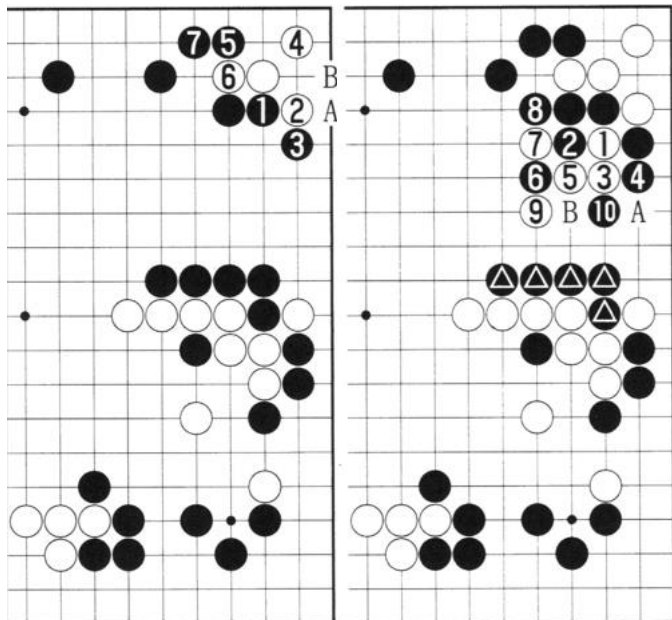
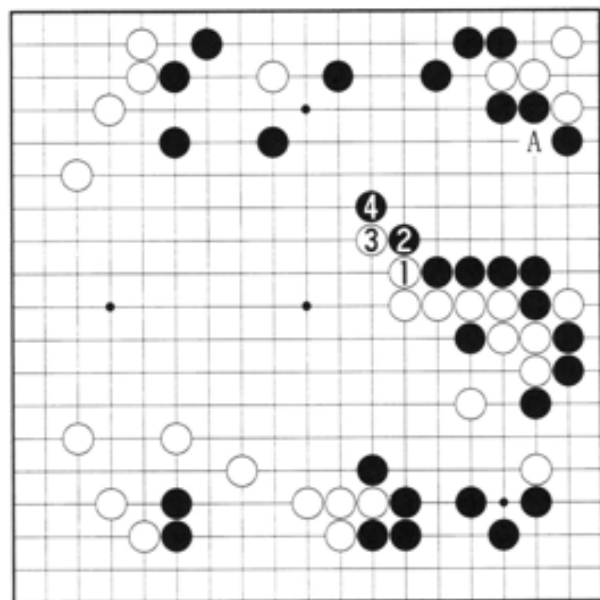


Figure 3 & 4: Left: Black 1 is the first instinct of many, than white may respond with 2 4 to keep an elastic shape, now a ko in A is not acceptable to the black so instead black must move at 5, aiming at eliminate the entire white corner.

Right: After that white cannot survive on the corner so it must try to use the black's weakness, however because the black ▲ group is very solid the black can move at 10. Up to now the white corner is dead and the white group outside is still very dangerous. If white place move 7 at 9 instead, the black can place its move at B point than slip by A, white also failed.



图五

Figure 5: although white cannot survive directly, those exchange leaves the black a weakness at A, the white can first focus back at creating more weakness at below. If the black would like to hold in 4, like it did at Figure 1, the white will take advantage of the weakness up and below together

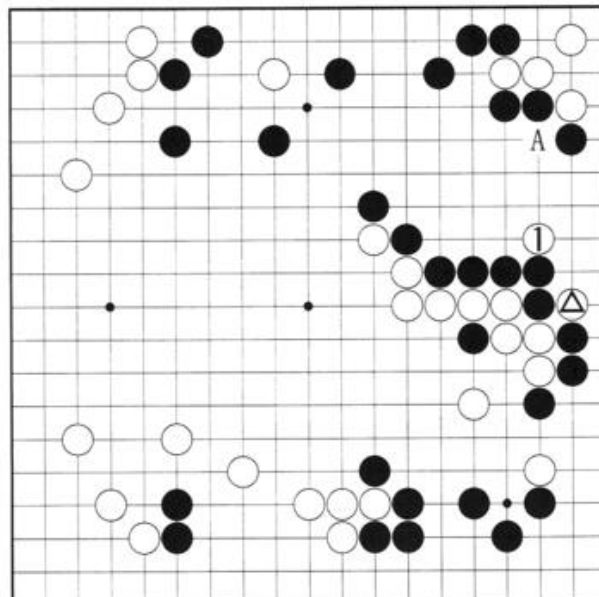


Figure 6: White 1 is a way to take advantage of the weakness at A and the weaknesses below

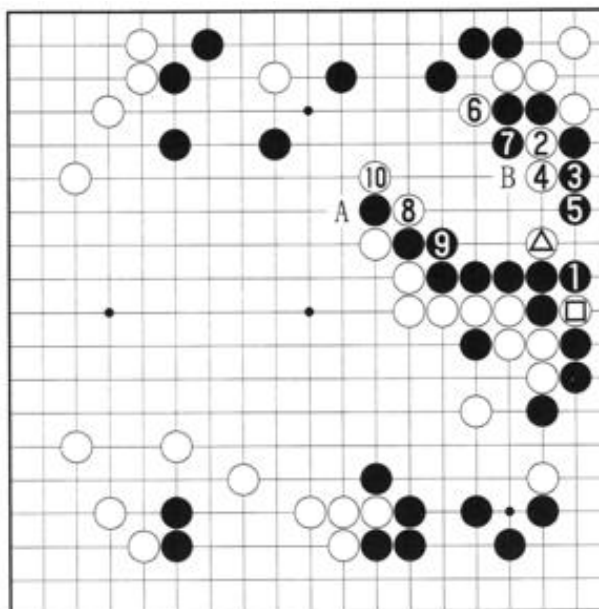


Figure 7: If the black attempt to eat the white □ below than the white would take advantage of the additional △ and move at 2. The black now has to move at 3, and the following is clearly the only way. Up to 10 the white can have A or B.

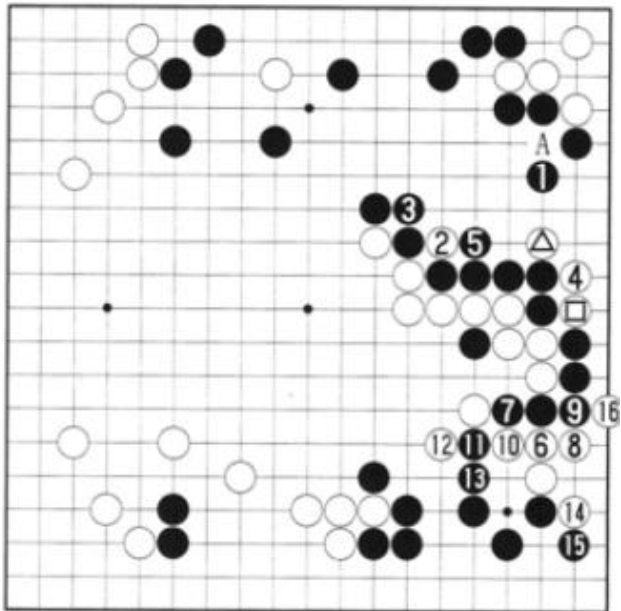


Figure 8: black 1 to secure the corner is also a failed attempt for the white can use the limited liberty of black. And white 4 to cut black in reverse sente. Than white 6 is also good way to limit black's liberty. The black is 1 liberty less to both above and below group

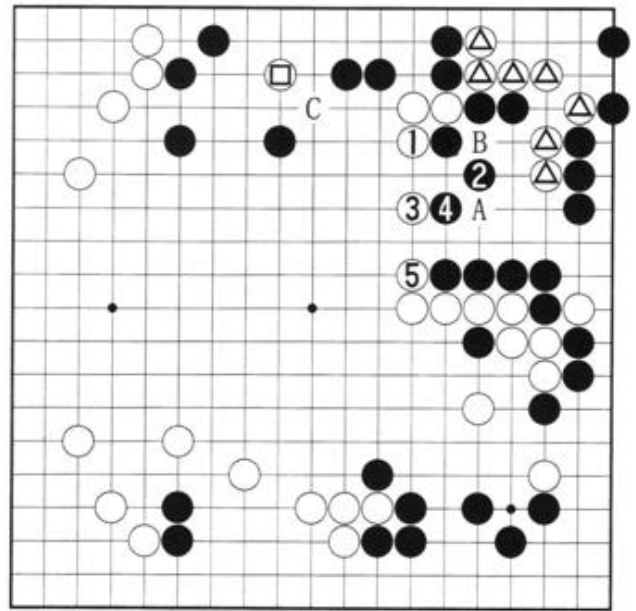


Figure 11: However, realizing the white's goal is to limit the black's territory rather than take it all out, the white 18 in Figure 10 should abandon the white Δ group and take advantage of it instead. After 1 3 the black is forced to respond at 4 in fear of the white's A and B move. But with move 4 the black has little gains and the white many connect with move 5. After that the black's influence is considerably limited (comparing to figure 1), and now the white \square has the potential to threaten black with move C it is rather successful in terms of limiting black's influence.

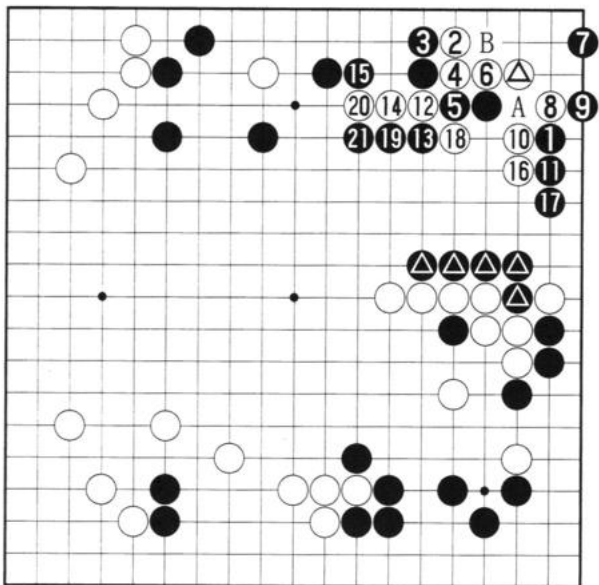


Figure 10: in Figure 2 if the black answered in B instead of A than it can better utilize the strength of black \blacktriangle group and if the white is determined to save the corner group the black can kill the entire group and seal its exit.

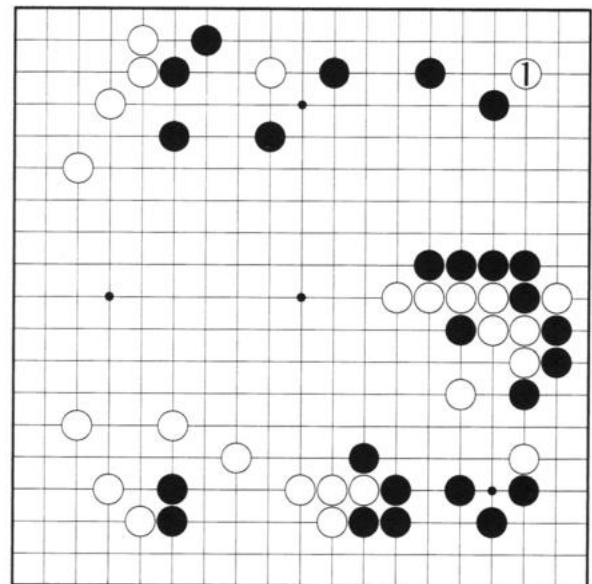
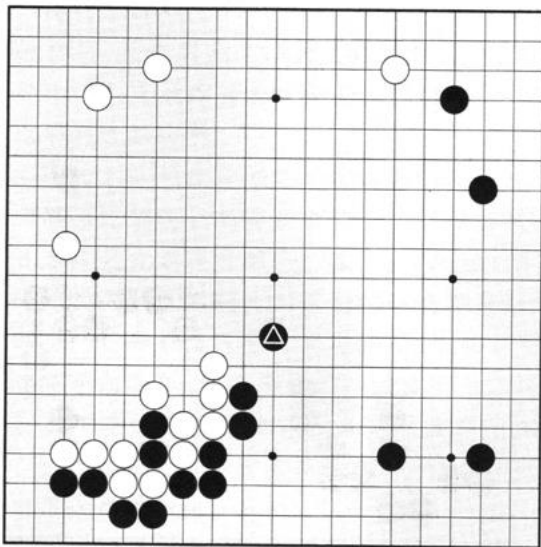


Figure 12: When your opponent try to expend his/her influence, it is useful to utilize the weakness in its corner area. Many tactics that explode the weakness of the corner will help you limit your opponents influence

A Guide to Invade and Evade

By Ge Yuhong's Dojo



Record 1: This Problem is taken from the 5th Mlily world open, Xie Er'Hao(谢尔豪 9p) black v. Liu YuHang (刘宇航 6p) white. At this point black ▲ tries to expend its influence below, what should white do in response

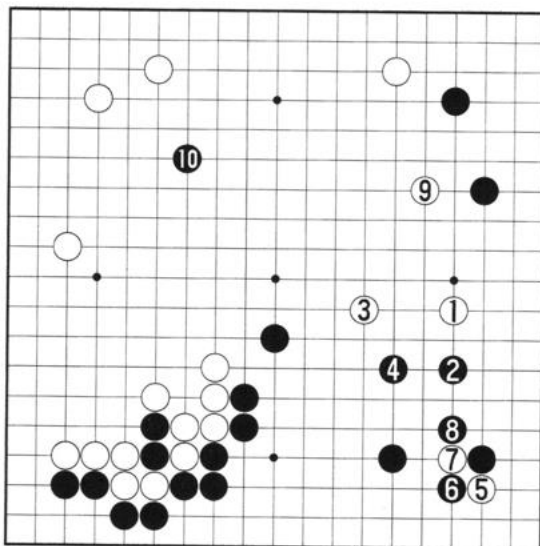


Figure 1: White 1 might be the most obvious way to limit the black's influence with little risks, yet the black 2 secure its influence below and until 10 the black almost turned the influence into territory. Although this is roughly balanced, the white now must take advantage of the influence while the black hold the solid territory, this perhaps is a disadvantage for white.

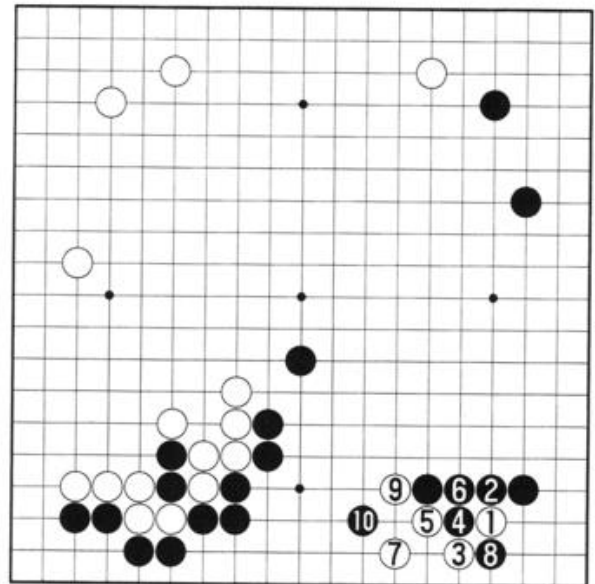
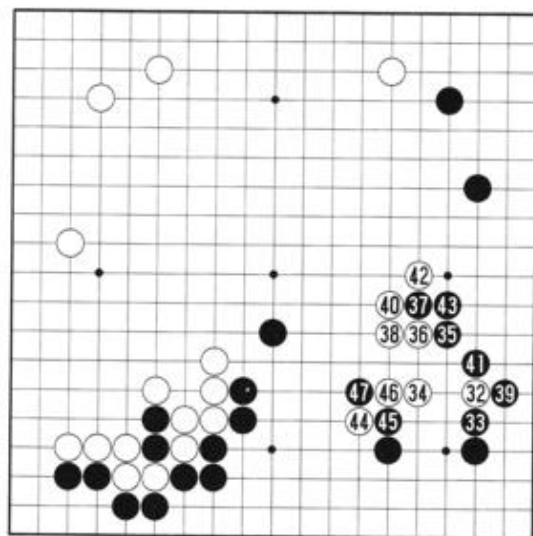


Figure 2: If the white go directly into blacks corner than until black 10, the black will be trying to eat the entire white group while the white struggling to survive, this would be very complicated and chaotic and some might not be confident to make the white survive.



Record 2: In this match the white choose to use a way kinda in between figure 1 and 2, the white 32, while aiming at the weakness at the corner, didn't go straight in. This allowed some flexibility.

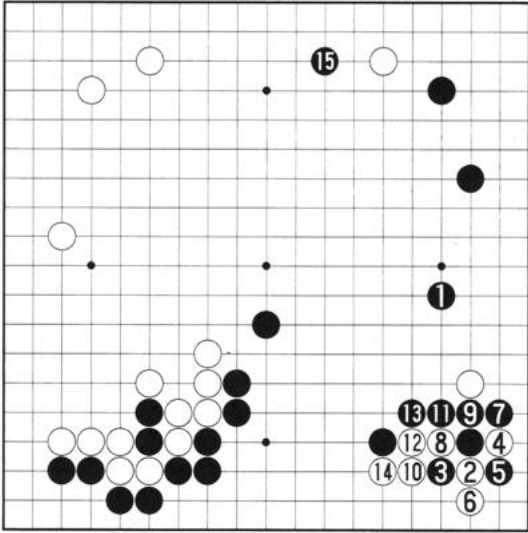


Figure 3: If the black tries to flank white at 1, the black may go in and take the corner. After a serial of exchange until 15, the rate of winning by AI is still balanced but since the white take the solid territory in the corner while the black has the influence, people perhaps prefer white.

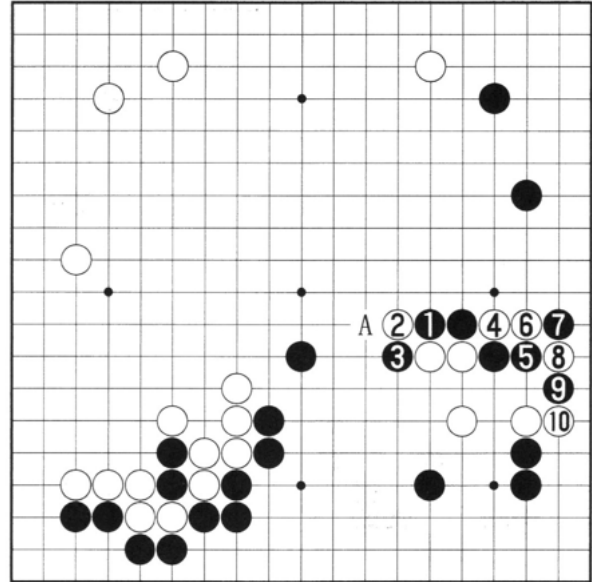


Figure 5: In record 2 if black 39 is instead placed in 1 to further attack the white, the white can take advantage of black's own flaw and hane at 2, than the black, has to deal with its 2 group. Until 10 with white A is the white's right, and black's flaw and limit liberty, the white group is basically out of the wood yet.

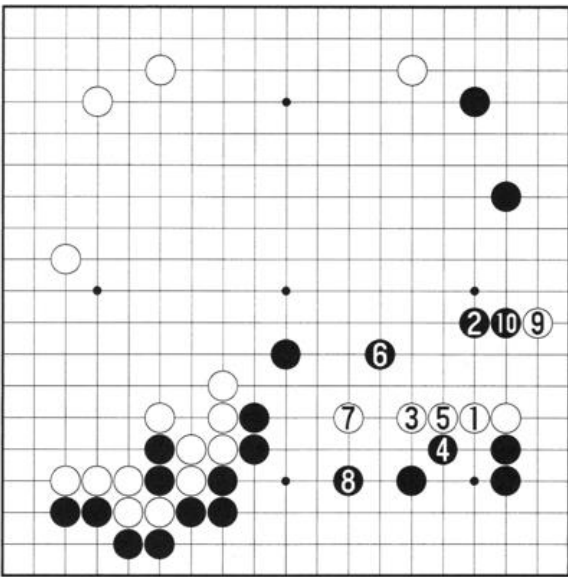


Figure 4: while evading attacks it might be helpful to keep flexible and fast like record 2. If the white move in 1 than it's a bit slow and gives the black an obvious target. The black is able to secure the territory below and the influence above at the same time while the white struggle to save every pieces.

Although there're no pawns in go, some pieces is still less important than the rest, so keep a high speed low drag when evading opponent's attack.

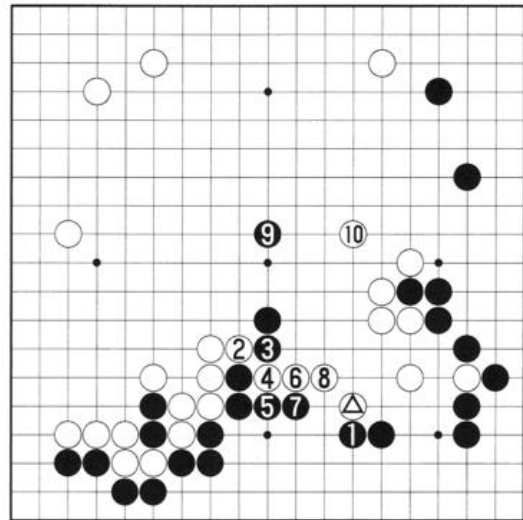


Figure 6: The white 44 in record 2 (△ here) is not just limiting black's influence, but also aiming at black's weakness. Had the black responded in 1, the white would have cut the black group above and the attacker is now being attacked. Black is not satisfied with this figure and decided to cut white △ with move 45 in record 2

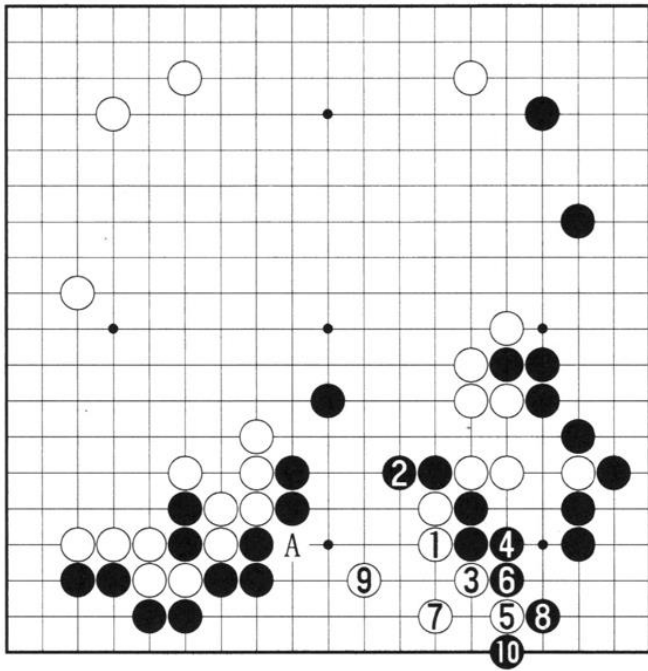
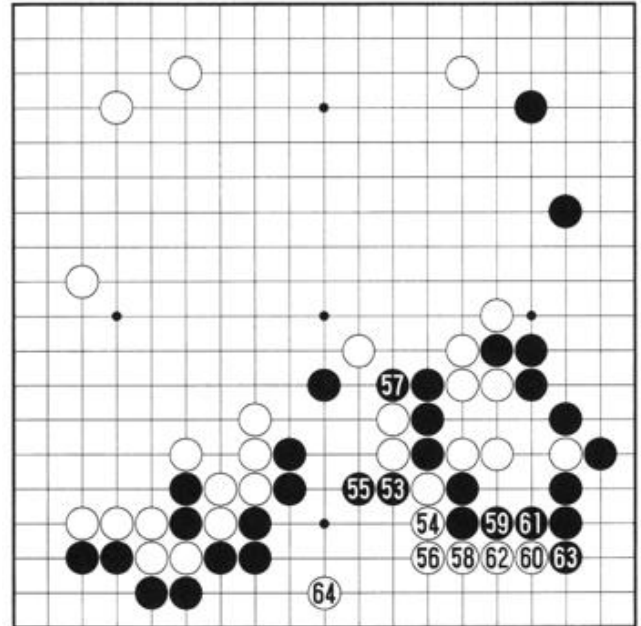
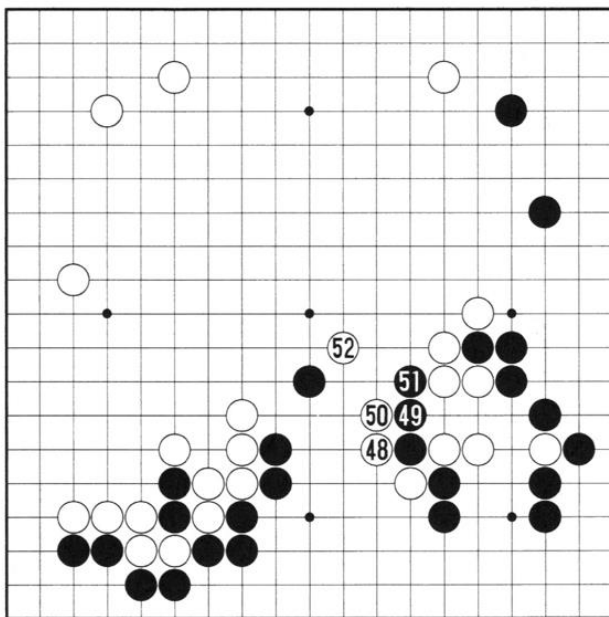


Figure 7: After the black 45, a risky way is white 1. Although taking the advantage of the A the white cannot be killed directly the white has infect strengthen the black outside while it only has a ko. This choice is very risky while the white group below is not completely safe, the group above is also in danger.



Record 4: The black cannot accept the white taking 3 stone in the middle for in that case the white would be completely save while destroying the black influence. But the white in turn can gain much more territory than figure 7. Also the black's limited liberty in the middle means the white group in the centre is considerably safer than figure 7



Record 3: the white 52 is a very a flexible move and is ready to sacrifices some white pieces for the 'greater good'

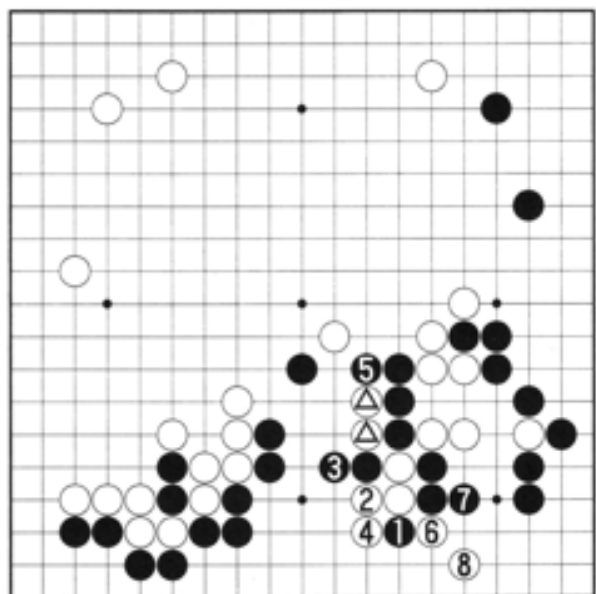


Figure 8: If the black respond in 1 the outcome is similar, as the white is able to secure the group below and above simultaneously.

In many case we may need to invade an opponent's influence then evade, while doing so, I hope today's example of using corner and keeping flexible can provide new options.